



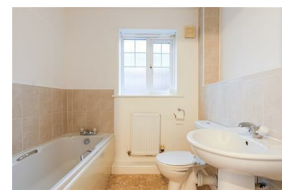
# Alexander Hudson Estates

---

Sales Particulars

# Alexander Hudson Estates

Monarch Court, Longbenton, NE12



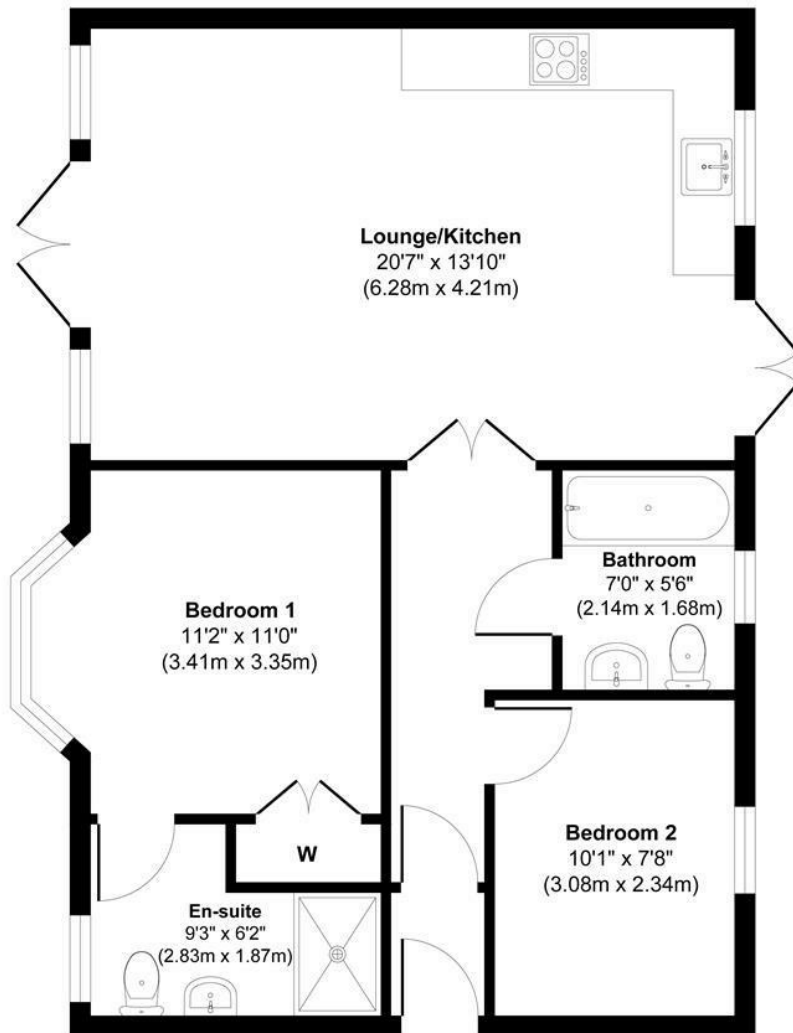


# The Property

Alexander Hudson Estates are delighted to present to the market this beautifully maintained and stylishly presented two-bedroom ground floor flat, situated in the increasingly sought-after residential area of Longbenton, NE12. This charming property offers spacious and modern accommodation ideal for first-time buyers and professionals alike.

Internally, the flat comprises a welcoming entrance hallway that leads through to a generously sized open plan living room with adjacent fully integrated kitchen. The property boasts two spacious double bedrooms, one with en-suite access and a contemporary three-piece bathroom suite. Externally, the flat benefits from well-maintained communal grounds and parking.

Located just a short stroll from Longbenton Metro Station, the flat enjoys excellent transport links into Newcastle city centre and surrounding areas. A wide array of local amenities are within easy reach, including supermarkets, cafes, pubs, restaurants, and highly regarded schools.



Ground Floor

Approx. Gross Internal Floor Area 661 sq. ft / 61.41 sq. m

Illustration for identification purpose only, measurements approximate and not to scale, unauthorized reproduction is prohibited. All rights reserved for Alexander Hudson Estates

Leasehold  
Council Tax: A  
EPC Rating: 79





---

Alexander Hudson Estates  
The Printworks  
20 Arrow Close  
NE12 6QN

0191 268 7433  
[sales@alexanderhudson.co.uk](mailto:sales@alexanderhudson.co.uk)